

Platinum International Fund

31 May 2011

Fund Details	Description
APIR Code	PLA0002AU
Asset Class	International Shares
Sub-Asset Class	Specialist
Benchmark	MSCI World Index \$A
Investment Manager	Platinum Asset Management
Minimum Investment	\$ 25,000*
MER	1.54 (% p.a.)
Income Distributions	Jun
Redemption Frequency	Daily

* Unless designated by IDPS

Investment Objective

The manager aims to provide capital growth over the long term through searching out undervalued listed and unlisted investments around the world.

Investment Strategy

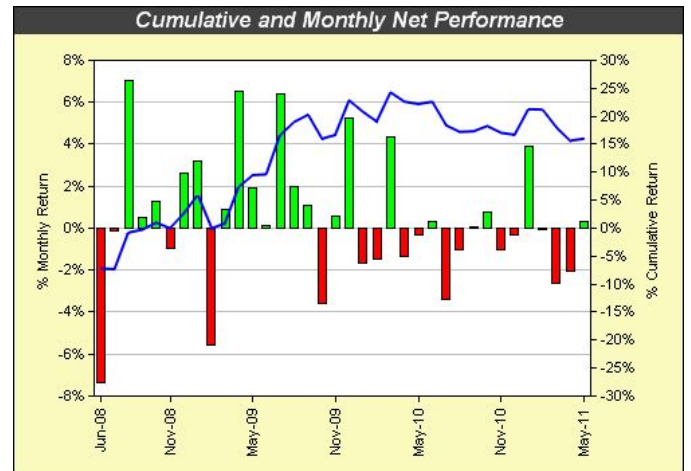
The fund invests in traditional and emerging markets from around the world and the portfolio consists of around 75-150 stocks.

Investor Profile

This fund is suitable for those investors with a moderate to high risk profile seeking an investment in an alternative investment type designed to provide additional portfolio returns and diversification. Investors should expect a medium to high level of volatility over shorter term periods and as a result need to adopt a medium to longer term investment timeframe of 5+ years.

Manager Background

Platinum Investment Management Limited is an Australian based fund manager, specialising in international equities. Platinum manages around A\$18 billion from investors in New Zealand, Europe, America and Asia. Platinum's investment methodology is applied with the aim of achieving absolute returns for investors, with a focus is on managing clients' money rather than gathering funds under management. Platinum is owned by Platinum Asset Management Limited, a company listed on the Australian Stock Exchange. Following the listing, outside interests hold approximately 30% of the company. Sales and distribution functions are generally outsourced. This is achieved through joint ventures with partners such as MLC Investments in Australia and Optima Fund Management in New York.



Performance Statistics		5 Yrs	3 Yrs	1 Yr
Performance (% p.a.)	Fund	2.16	5.03	-5.08
	Benchmark	-3.95	-4.81	2.41
	Median	2.08	3.23	4.41

DISCLAIMER: This report is prepared exclusively for clients of Zenith Investment Partners (Zenith). The report contains recommendations and advice of a general nature and does not have regard to the particular circumstances or needs of any specific person who may read it. Each client should assess either personally or with the assistance of a licensed financial adviser whether the Zenith recommendation or advice is appropriate to their situation before making an investment decision. The information contained in the report is believed to be reliable, but its completeness and accuracy is not guaranteed. Opinions expressed may change without notice. Zenith accepts no liability, whether direct or indirect arising from the use of information contained in this report. No part of this document is to be construed as a solicitation to buy or sell any investment. The performance of the investment in this report is not a representation as to future performance or likely return. The material contained in this report is subject to copyright and may not be reproduced without the consent of the copyright owner. Zenith usually receives a fee for assessing the fund manager and product(s) described in this document against accepted criteria considered comprehensive and objective.